

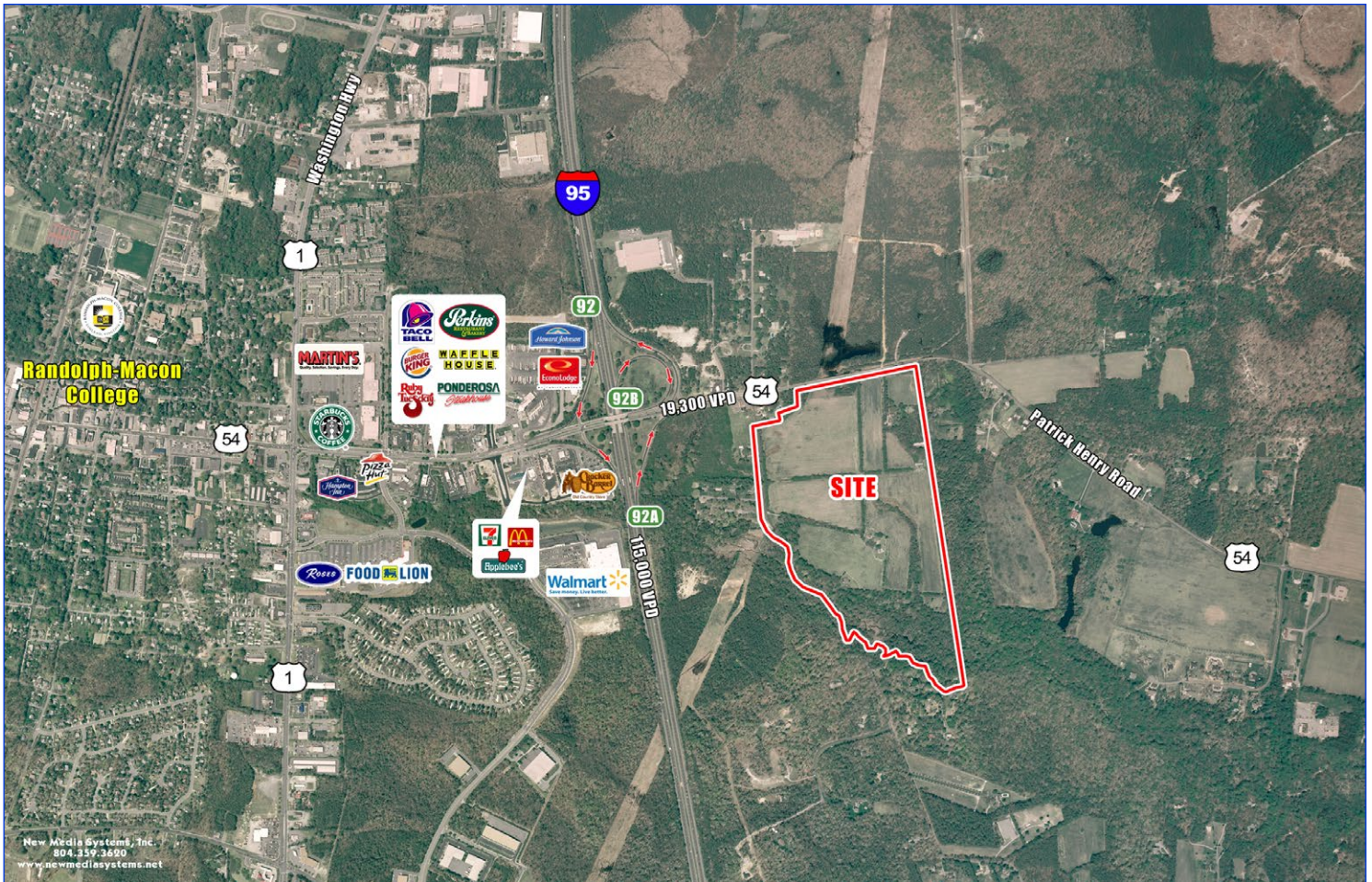
East Ashland

96 Acres For Sale & Development

SE Corner of I-95 and RT 54
Ashland, VA



“COMPLETE THE CIRCLE OF RICHMOND RETAIL” ZONED RETAIL-RESIDENTIAL-OFFICE CAN PURCHASE COMMERCIAL SEPARATELY



Additional Document Links:

Click to download

- [East Ashland PUD \(See page 2\)](#)
- [East Ashland Survey \(See page 3\)](#)
- [East Ashland Design Guidelines](#)
- [East Ashland Statement of Proffers](#)
- [Richmond Retail Aerial \(See page 4\)](#)

	Demographics			
	3 Mile	5 Mile	7 Mile	10 Mile
Population	9,496	18,226	44,753	135,648
Avg. Income	\$73,675	\$90,362	\$93,198	\$88,860
Households	3,457	6,766	16,032	51,274

Traffic Counts

- 43,300 VPD-Route 54-Randolph Macon College to ECL Ashland
- 115,000 VPD-I-95 & Route 54 intersection

John Jay Schwartz, MCR, RPA
phone (804) 740-1555
jjschwartz@havesitewilltravel.com
www.HaveSiteWillTravel.com



East Ashland

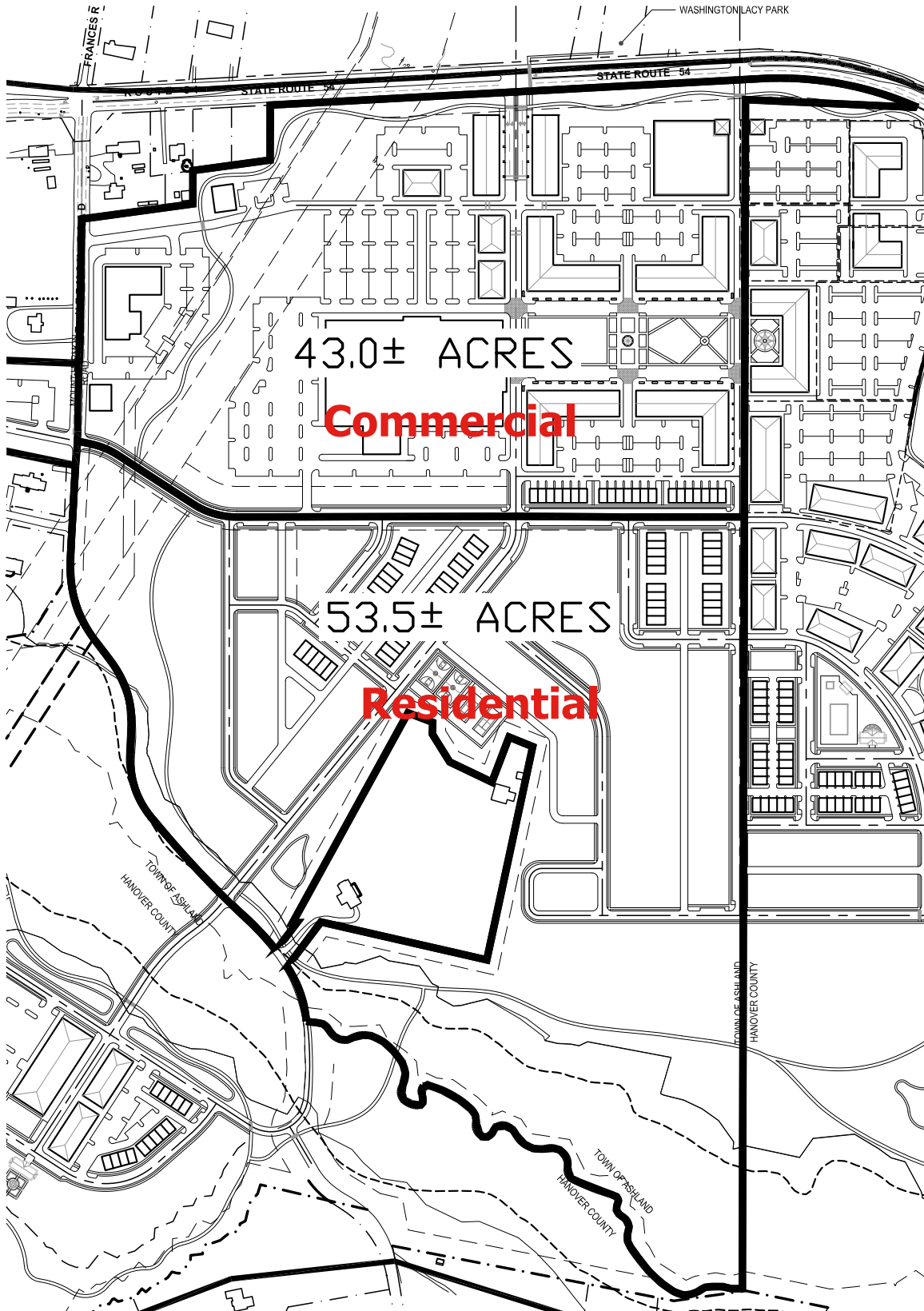
96 Acres For Sale & Development

SE Corner of I-95 and RT 54
Ashland, VA



THE MAN WITH SQUARE FEET

Celebrating 40 years with 40 million sq. ft.



John Jay Schwartz, MCR, RPA
phone (804) 740-1555
jjschwartz@havesitewilltravel.com
www.HaveSiteWillTravel.com



Information contained within is deemed reliable, but is not guaranteed. Subject to prior leasing.

East Ashland

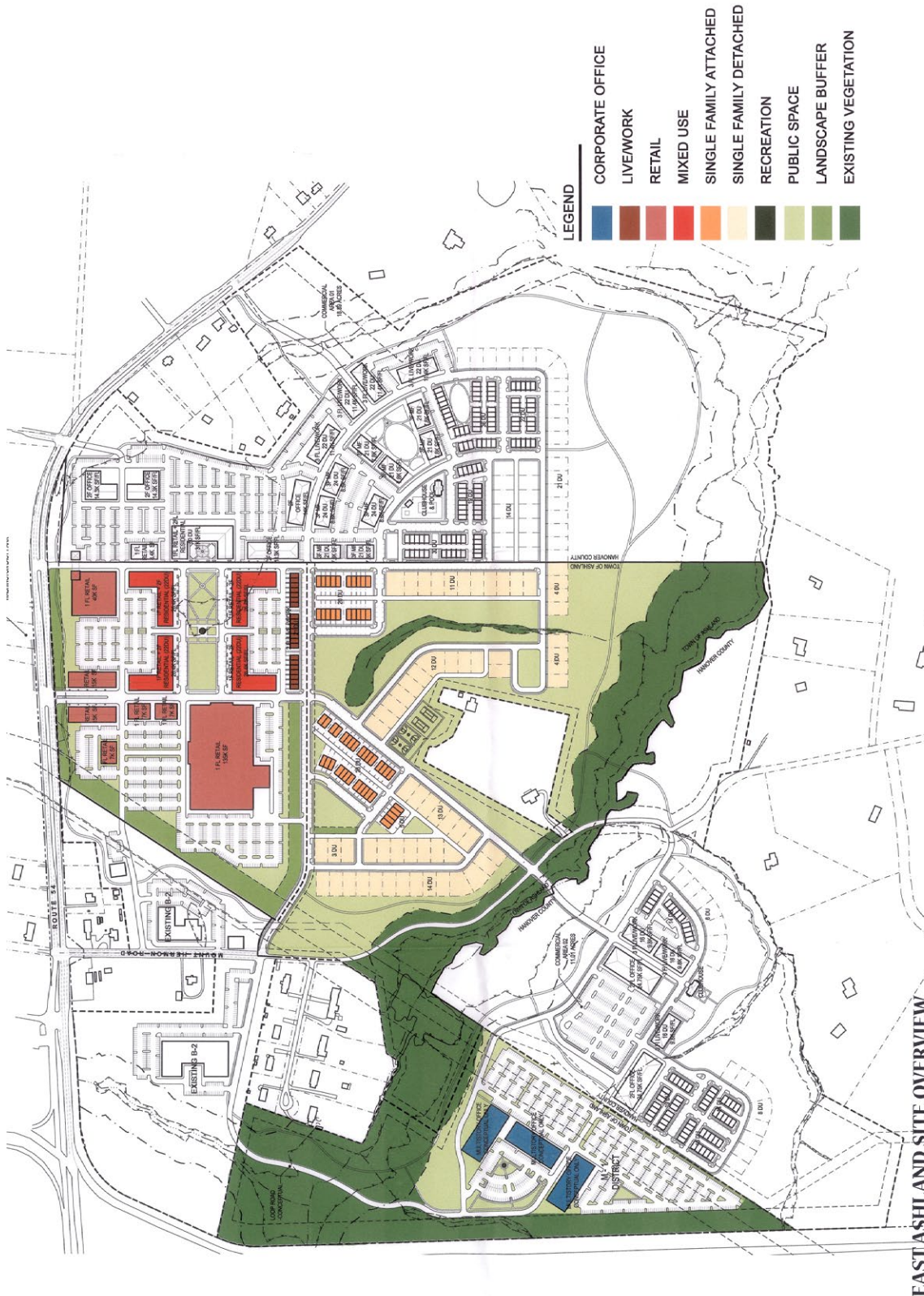
96 Acres For Sale & Development

SE Corner of I-95 and RT 54
Ashland, VA



THE MAN WITH SQUARE FEET

Celebrating 40 years with 40 million sq. ft.



EAST ASHLAND SITE OVERVIEW

John Jay Schwartz, MCR, RPA
phone (804) 740-1555
jjschwartz@havesitewilltravel.com
www.HaveSiteWillTravel.com



Information contained within is deemed reliable, but is not guaranteed. Subject to prior leasing.

East Ashland

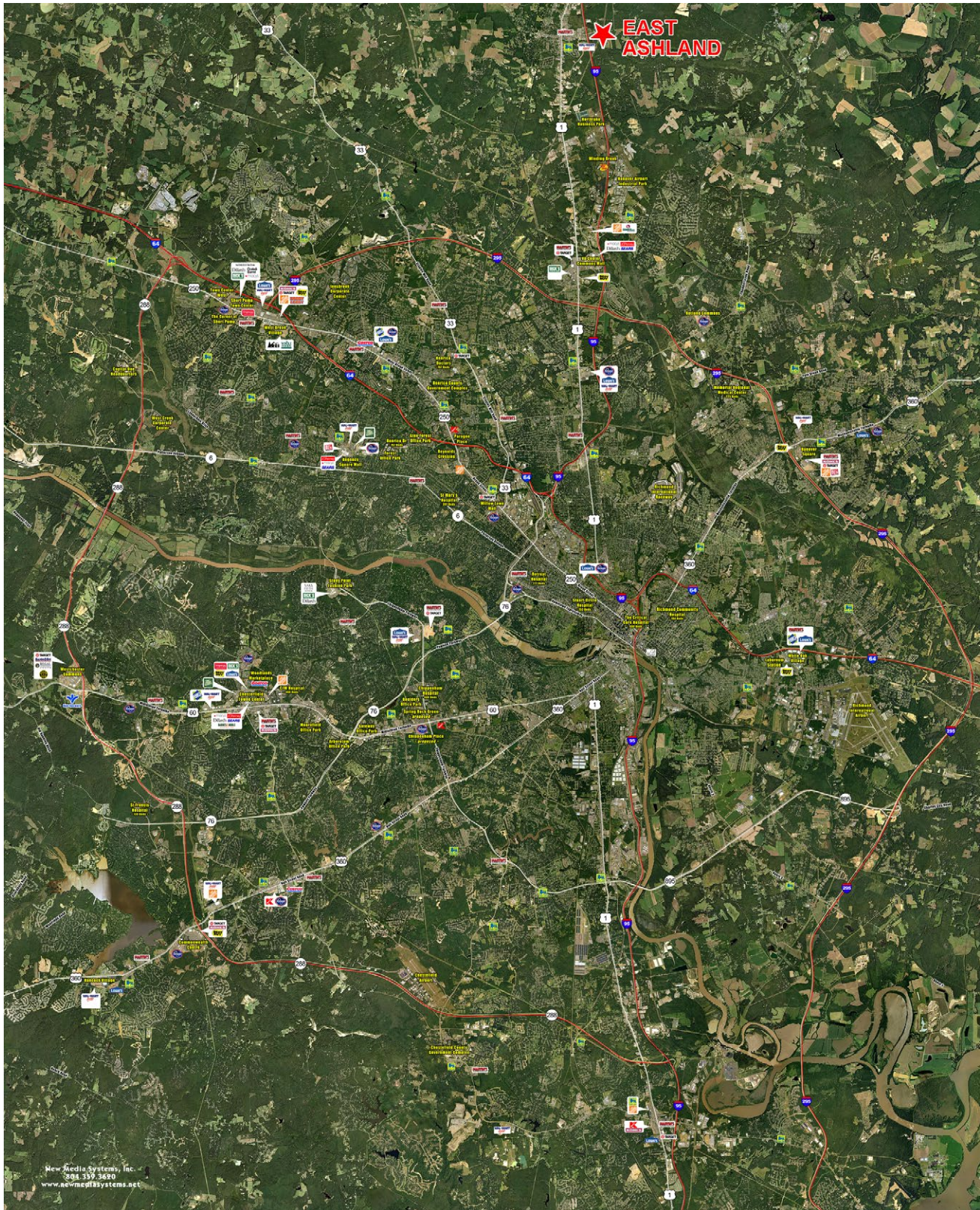
96 Acres For Sale & Development

SE Corner of I-95 and RT 54
Ashland, VA



THE MAN WITH SQUARE FEET

Celebrating 40 years with 40 million sq. ft.



New Media Systems, Inc.
804.339.3690
www.newmediasystems.net

[Click Here](#) to download hi-resolution image of the Richmond Retail Aerial

John Jay Schwartz, MCR, RPA
phone (804) 740-1555
jjschwartz@havesitewilltravel.com
www.HaveSiteWillTravel.com



Information contained within is deemed reliable, but is not guaranteed. Subject to prior leasing.

East Ashland

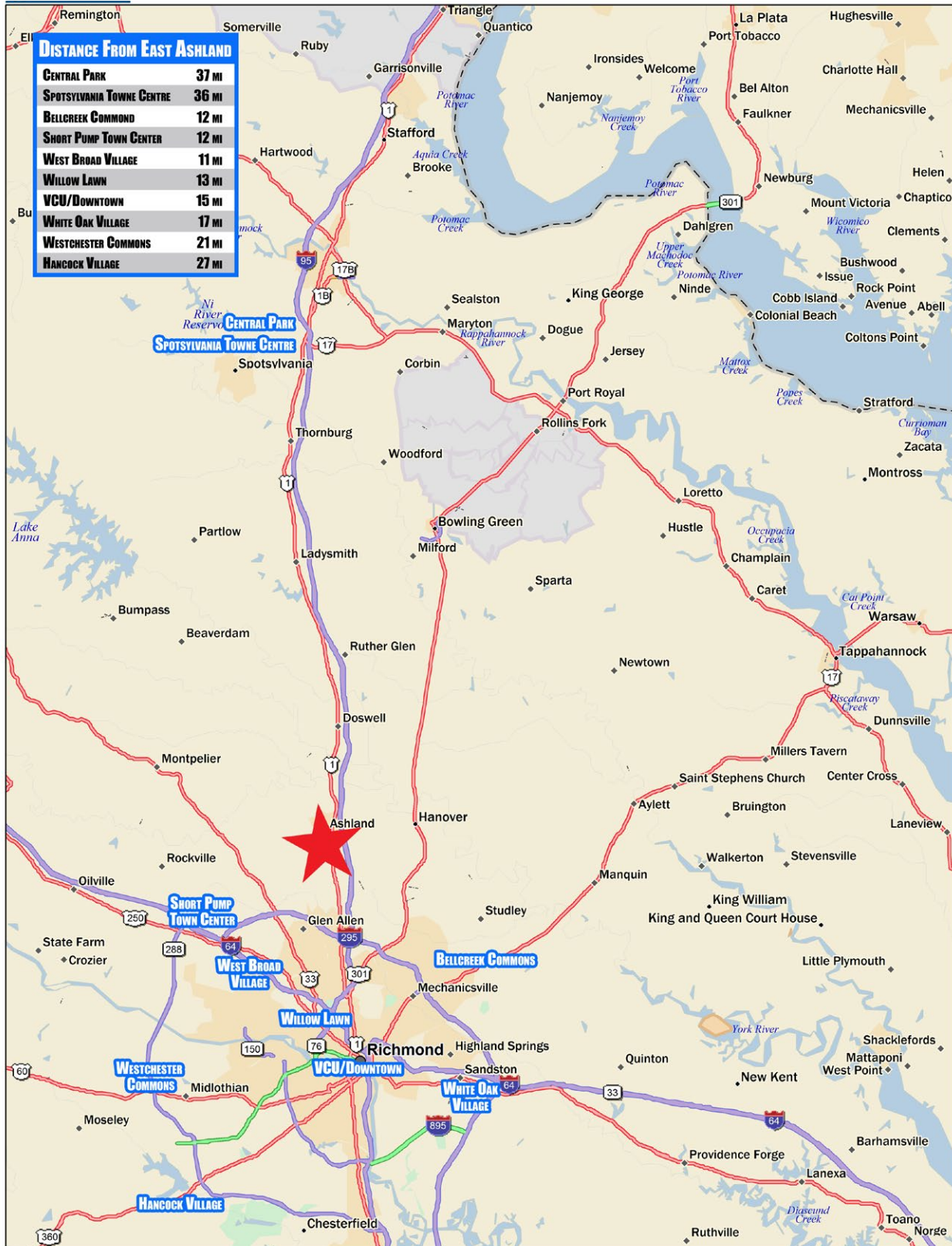
96 Acres For Sale & Development

SE Corner of I-95 and RT 54
Ashland, VA



THE MAN WITH SQUARE FEET

Celebrating 40 years with 40 million sq. ft.



John Jay Schwartz, MCR, RPA
phone (804) 740-1555
jjschwartz@havesitewilltravel.com
www.HaveSiteWillTravel.com



Information contained within is deemed reliable, but is not guaranteed. Subject to prior leasing.