

10465 Dow Gil Road  
Ashland, VA 23005

FOR LEASE

CLOSE TO  
ROUTE 1



AVAILABLE  
JUNE 1ST 2020

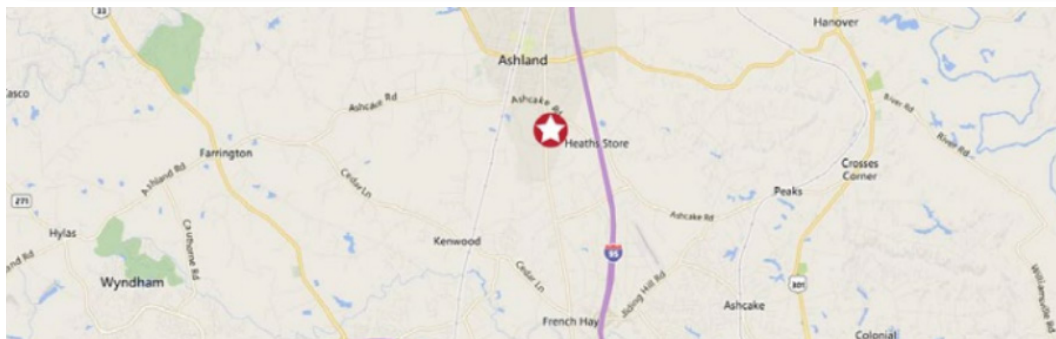


BEST USE-OFFICE  
&/OR LIGHT ASSEMBLY



## PROPERTY DESCRIPTION

- Best use-Office &/or light assembly
- ± 3,384 SF
- \$7.95/SF IG
- Close to Route 1
- Available June 1st, 2020
- Lots of parking at front and side door



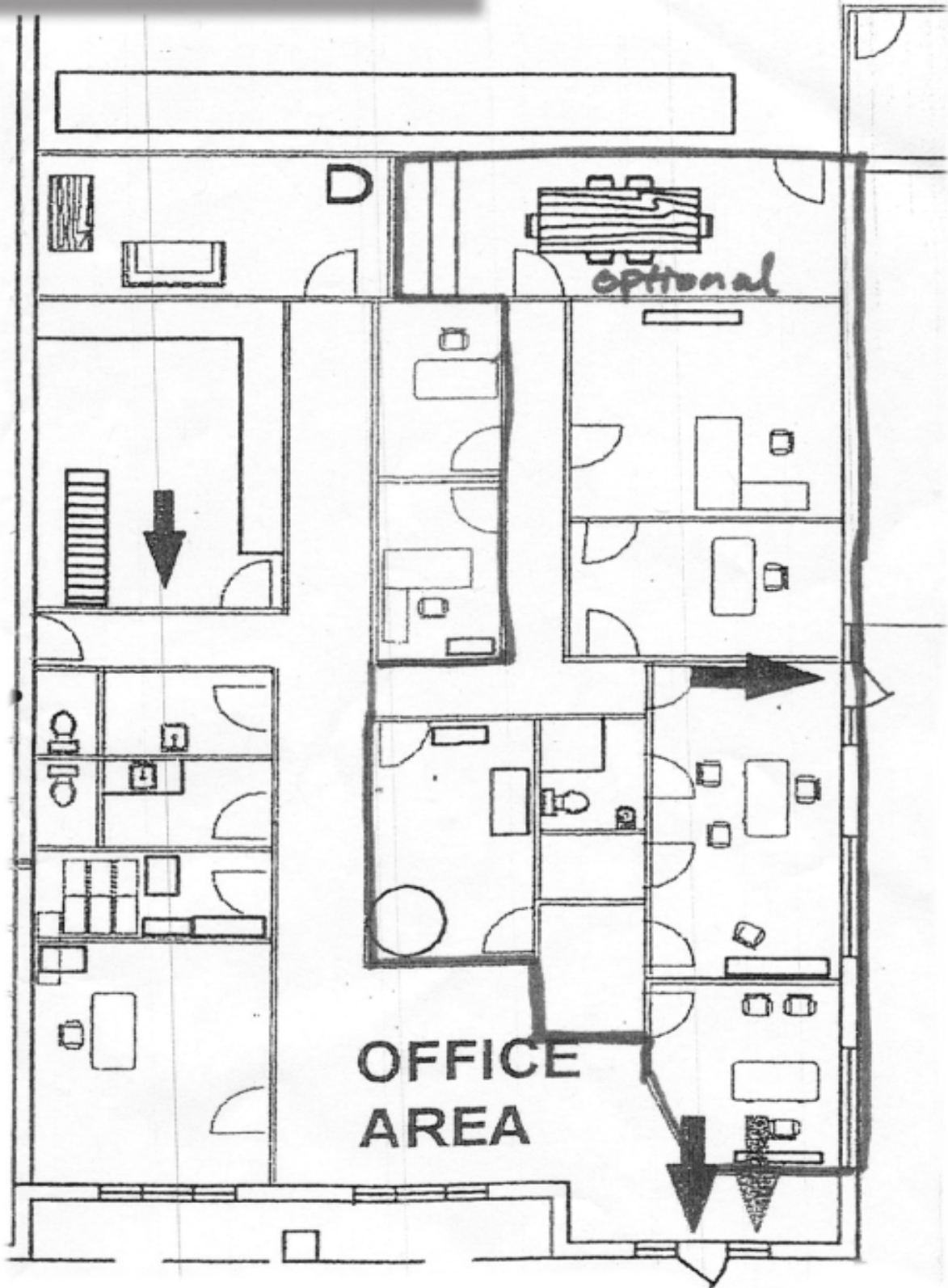
John Jay Schwartz, MCR, RPA  
804.350.1866 | [jjschwartz@havesitewilltravel.com](mailto:jjschwartz@havesitewilltravel.com)  
[www.HaveSiteWillTravel.com](http://www.HaveSiteWillTravel.com)



THE MAN WITH SQUARE FEET®

10465 Dow Gil Road  
Ashland, VA 23005

FOR LEASE



John Jay Schwartz, MCR, RPA  
804.350.1866 | jjschwartz@havesitewilltravel.com  
www.HaveSiteWillTravel.com

