

Manakin Crossing

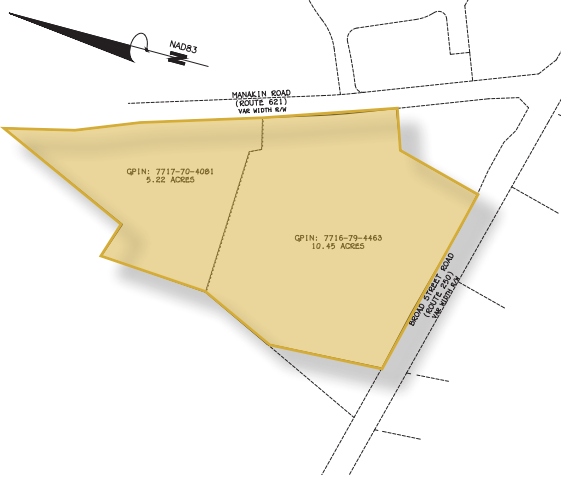
Broad Street & Manakin Road

Manakin-Sabot, VA | Goochland County

FOR SALE

Up to ±15 Acres

ZONED B-1

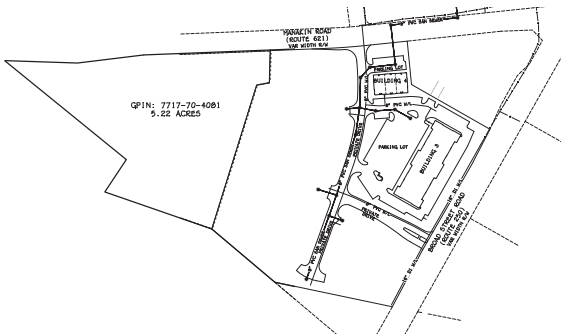


RETAIL PAD SITES AVAILABLE

DEMOGRAPHICS

3 Miles 5 Miles 10 Miles

Average HH Size	2.70	2.71	2.56
Total Population	6,684	51,515	194,266
Median HH Income	\$105,000	\$89,000	\$75,000



PROPERTY DESCRIPTION

- Pad sites from 0.4 acres to 8+/- acres
- Zoned B-1 - 10 Acres
- Statement of Proffers ([Click here for PDF](#))
- Sewer and Water
- Call for Pad Pricing
- Developed pad sites
- Road access from Broad St. and Manakin Rd. and inside the center
- Water/sewer stubs
- Storm sewer and drainage
- Rough grading (not paved nor striped)
- Curb and gutter
- Common area landscaping only

PAD SITES FROM 0.4 ACRES TO 8+/- ACRES

John Jay Schwartz, MCR, RPA
 804.350.1866 | jjschwartz@havesitewilltravel.com
www.HaveSiteWillTravel.com



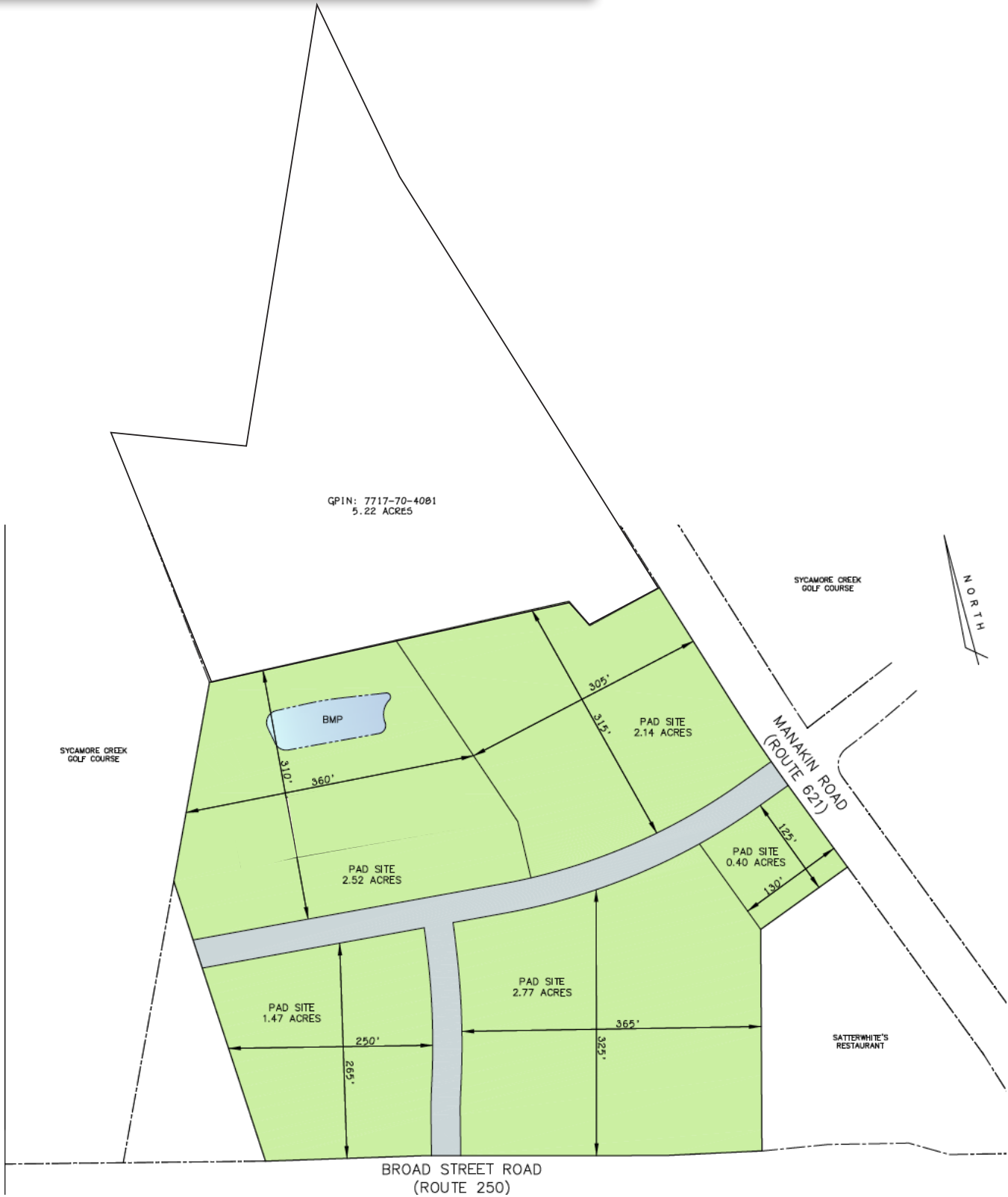
Manakin Crossing

Broad Street & Manakin Road

Manakin-Sabot, VA | Goochland County

FOR SALE

Up to ±15 Acres



John Jay Schwartz, MCR, RPA

804.350.1866 | jjschwartz@havesitewilltravel.com

www.HaveSiteWillTravel.com



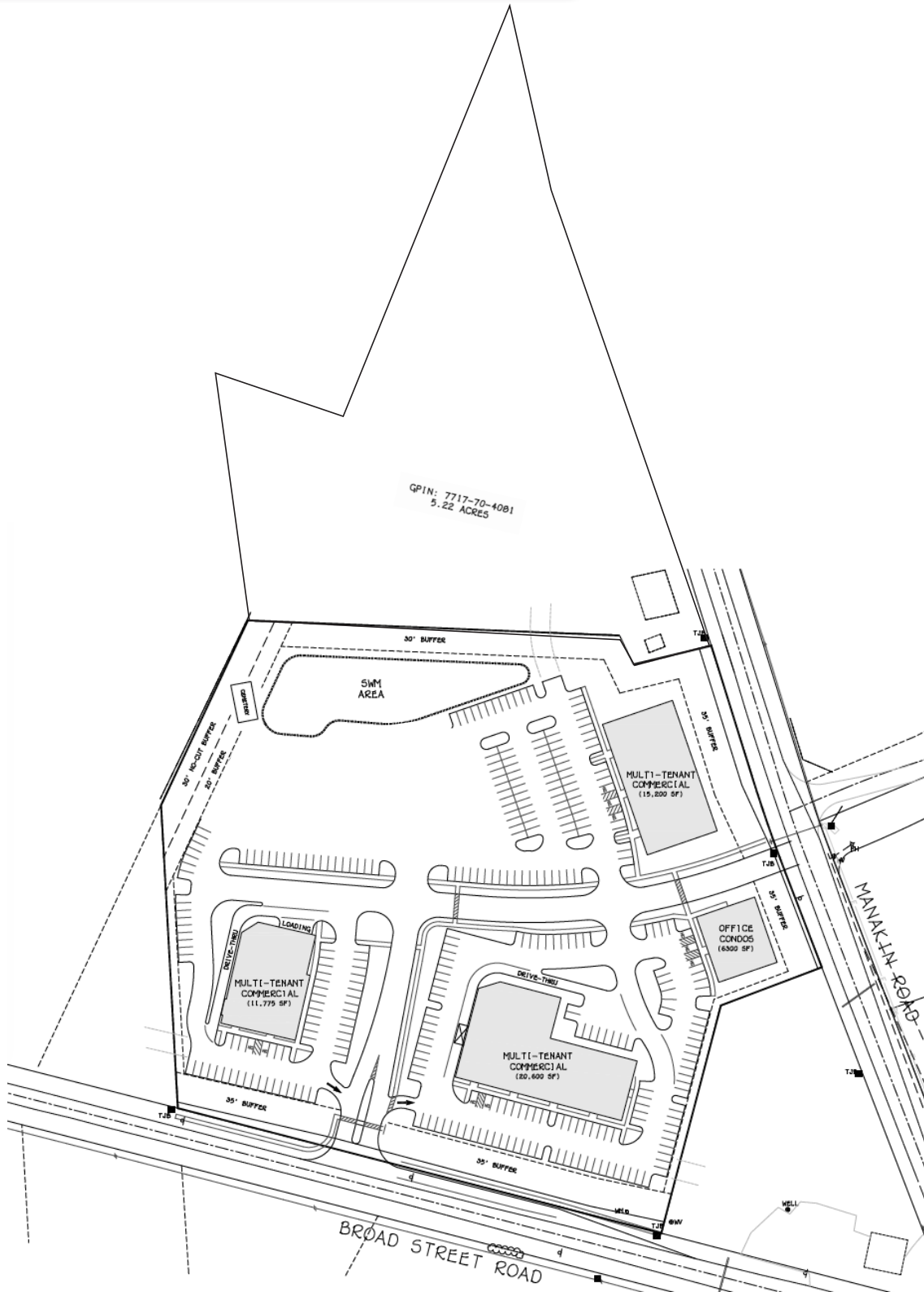
Manakin Crossing

Broad Street & Manakin Road

Manakin-Sabot, VA | Goochland County

FOR SALE

Up to ±15 Acres



John Jay Schwartz, MCR, RPA

804.350.1866 | jjschwartz@havesitewilltravel.com

www.HaveSiteWillTravel.com

