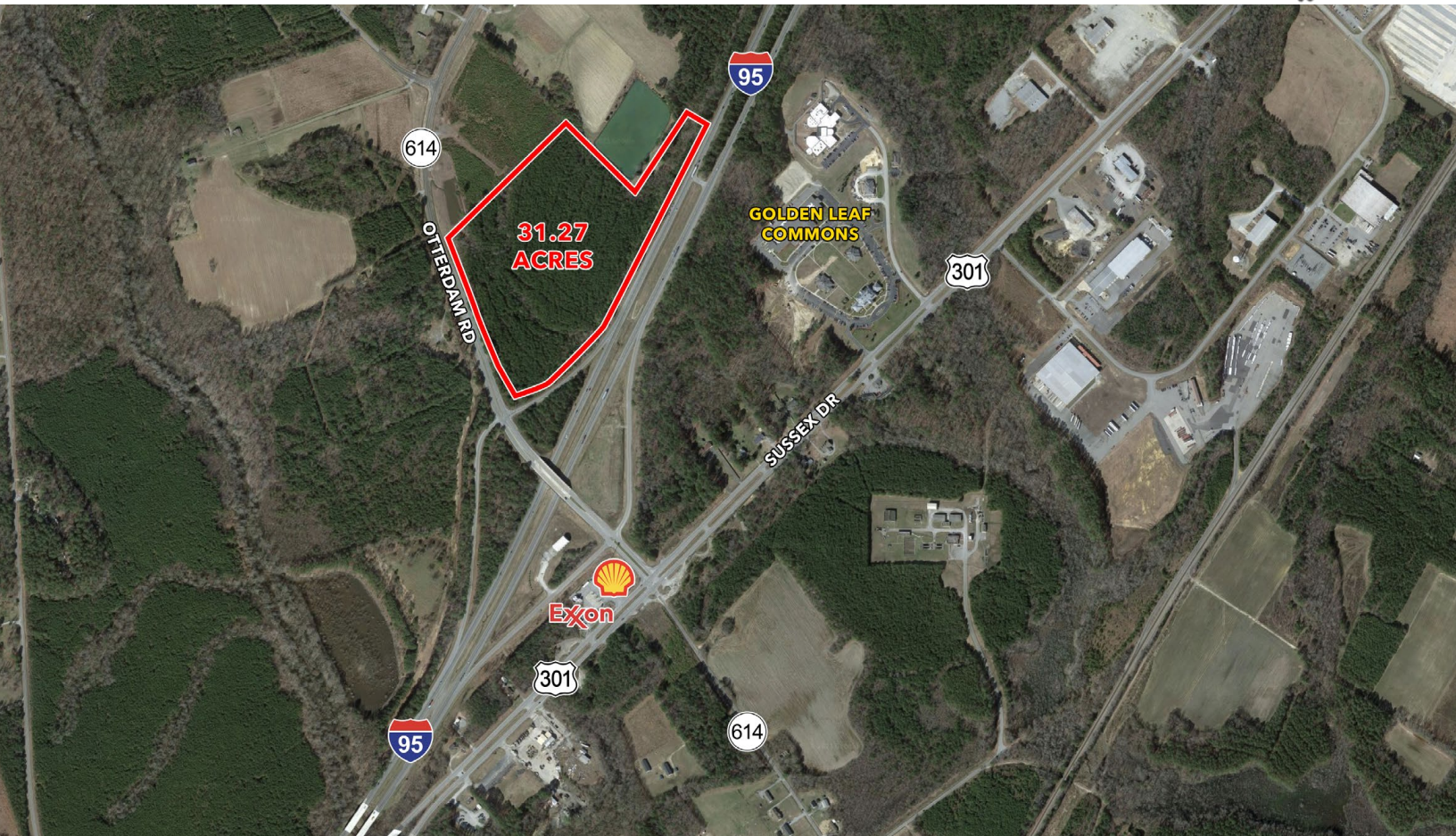


31± ACRES NW CORNER INTERSTATE 95 & RT 614 (OTTERDAM ROAD)

Emporia/Greensville County, VA



PROPERTY DESCRIPTION

- 31+/- acres
- Zoned A-1
- Water & Sewer
http://www.themanwithsquarefeet.com/constantcontact/_pdf/Otterdam-RD_water-sewer.pdf
- Development Draft
http://www.themanwithsquarefeet.com/constantcontact/_pdf/Otterdam-Rd_Development-Draft.pdf
- Base Map Plan
http://www.themanwithsquarefeet.com/constantcontact/_pdf/Otterdam-Rd_Base-Map.pdf
- Currently the land is zoned A-1, with a comp plan for business for commercial development (B-2, Commercial.) link zoning ordinance:
http://www.greensvillecountyva.gov/documents/Zoning_Ordinance.scanned.2020.pdf
See table 4:1 page 4:8 or page 33



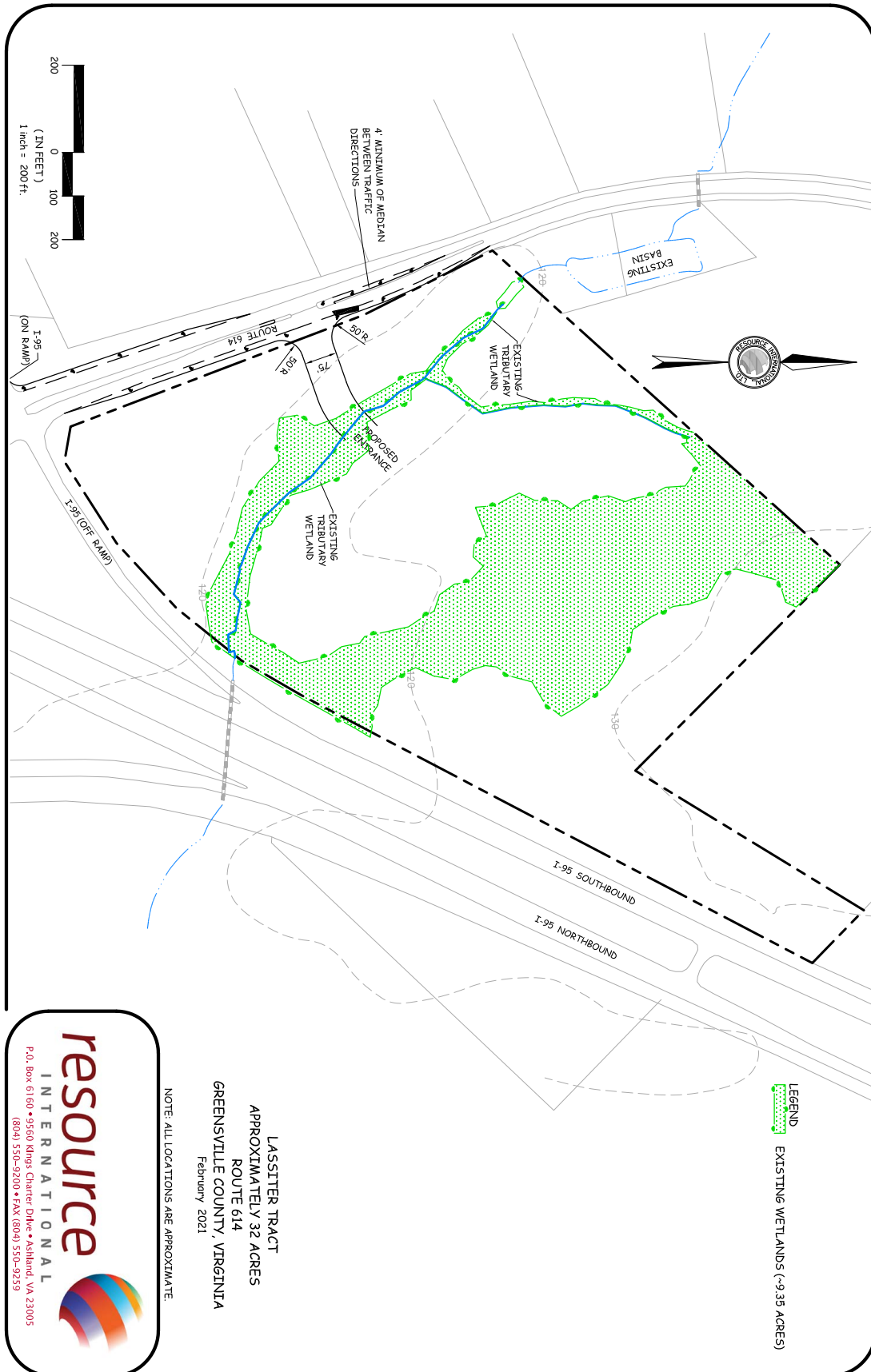
John Jay Schwartz, MCR, RPA
phone (804) 350-1866
jjschwartz@havesitewilltravel.com
www.HaveSiteWillTravel.com

31± ACRES NW CORNER INTERSTATE 95 & RT 614 (OTTERDAM ROAD)

Emporia/Greenville County, VA



S:\Planning\ACTIVE - Projects\220007.01 - Parcel-21-96N-Greenville-Va\Drawings\Wetlands Map\GC-TS-Wetlands.dwg Plotted: May 17, 2021-10:08am



resource
INTERNATIONAL
P.O. Box 6160 • 9560 Kings Charter Drive • Ashland, VA 23005
(804) 550-9200 • FAX (804) 550-9259

NOTE: ALL LOCATIONS ARE APPROXIMATE.
LASSITER TRACT
APPROXIMATELY 32 ACRES
ROUTE 614
GREENVILLE COUNTY, VIRGINIA
February 2021