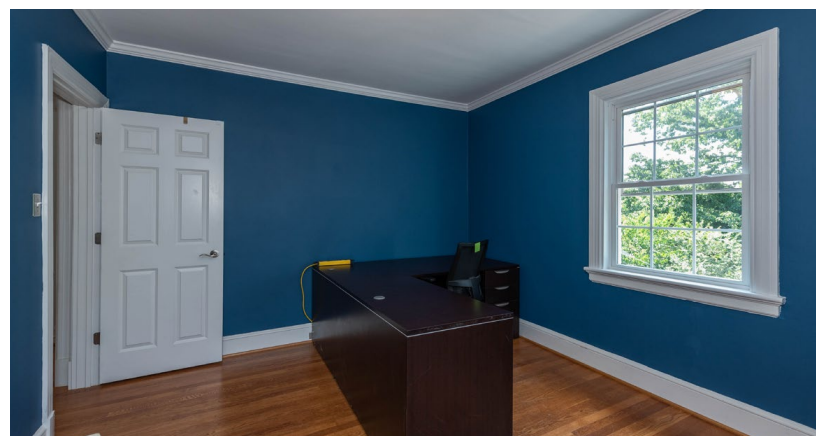


# For Lease: Office Building

1102 Welborne Dr

Richmond, VA 23229



## PROPERTY HIGHLIGHTS

- Two story, fully furnished office building with basement
  - with lots of parking
- 2,600 - RSF
- Monument signage available
- Zoning 0-2 office
- Great West End location near corner of Parham Rd & Patterson Ave
- Excellent visibility
- Many amenities and services nearby
- Immediate Occupancy
- \$15/sf Gross

## 2022 DEMOGRAPHICS

	1 Mile	3 Miles	10 Miles
Est. Population	11,686	76,031	609,464
Average HH Income	\$100,463	\$112,060	\$97,599
Median HH Income	\$69,888	\$78,785	\$68,549



**John Jay Schwartz, MCR, RPA**  
 phone (804) 350-1866  
[jjschwartz@havesitewilltravel.com](mailto:jjschwartz@havesitewilltravel.com)  
[www.HaveSiteWillTravel.com](http://www.HaveSiteWillTravel.com)



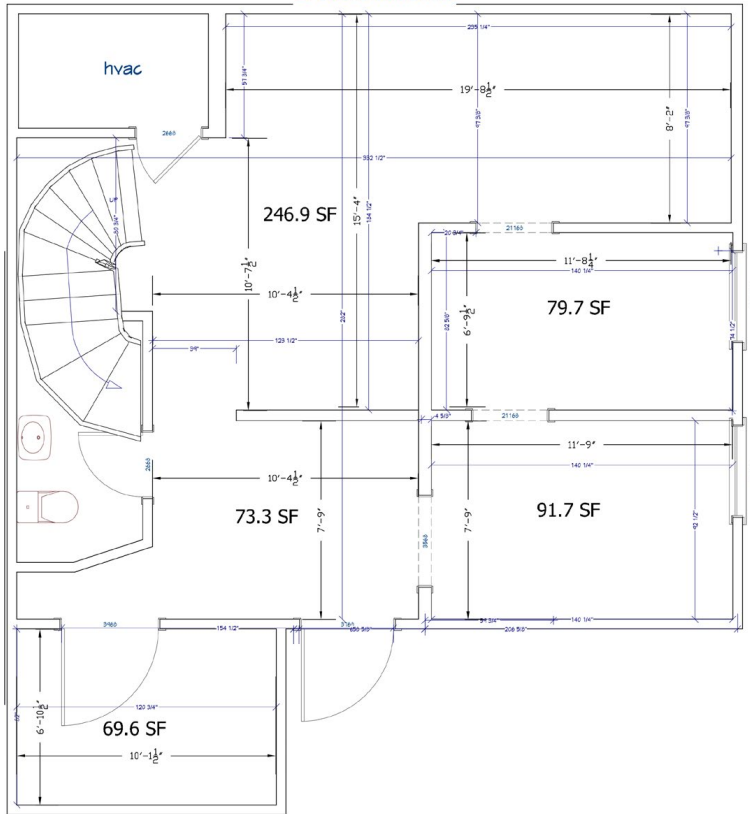
# For Lease: Office Building

1102 Welborne Dr

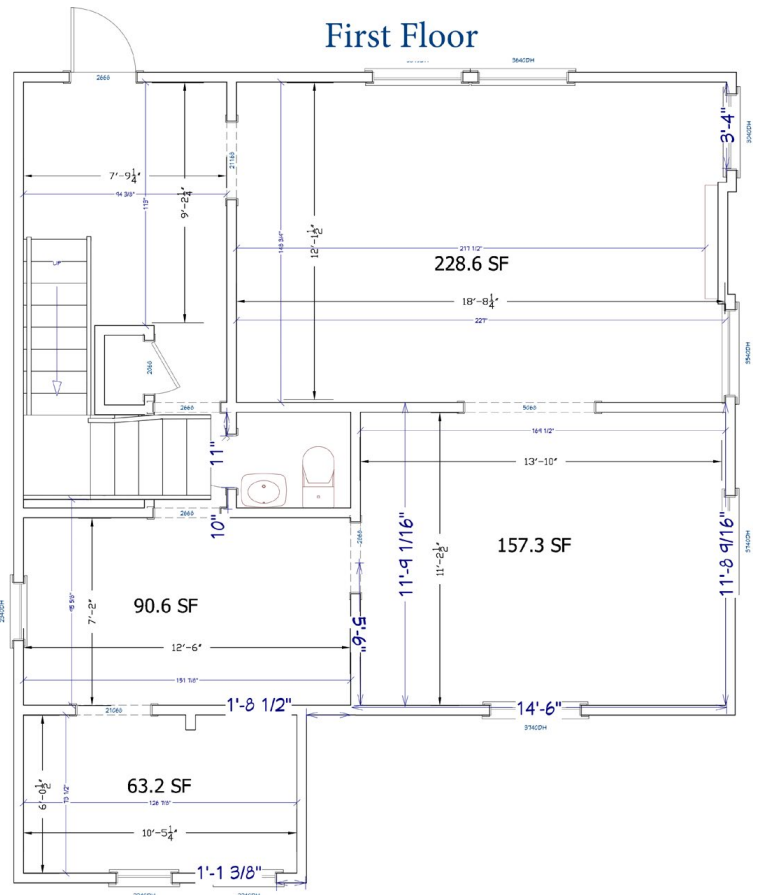
Richmond, VA 23229



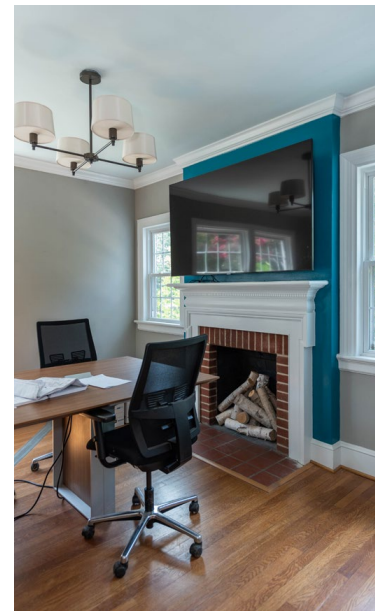
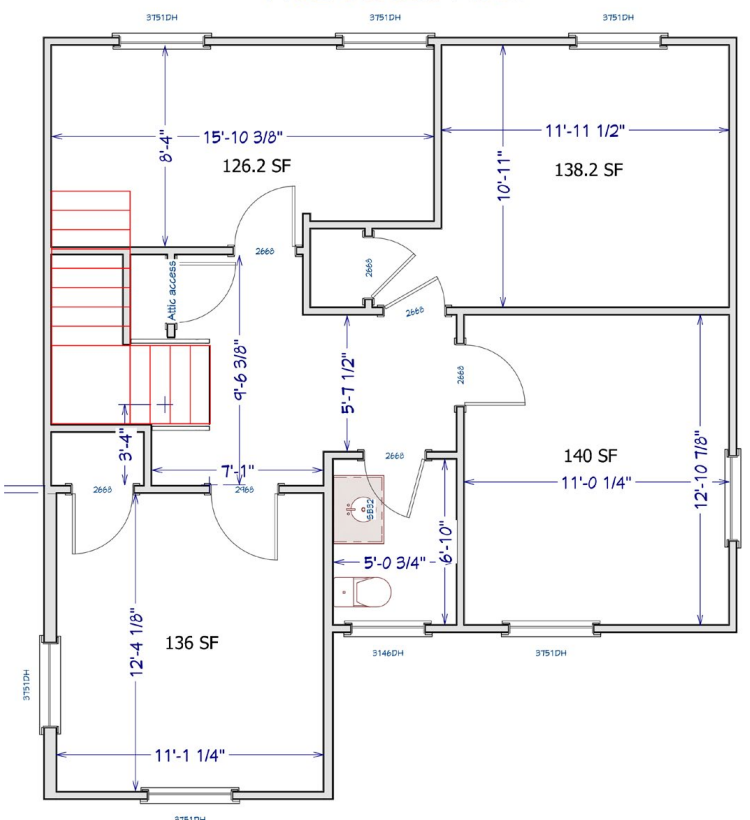
## Basement



## First Floor



## 1102 Second Floor



John Jay Schwartz, MCR, RPA  
 phone (804) 350-1866  
[jjschwartz@havesitewilltravel.com](mailto:jjschwartz@havesitewilltravel.com)  
[www.HaveSiteWillTravel.com](http://www.HaveSiteWillTravel.com)

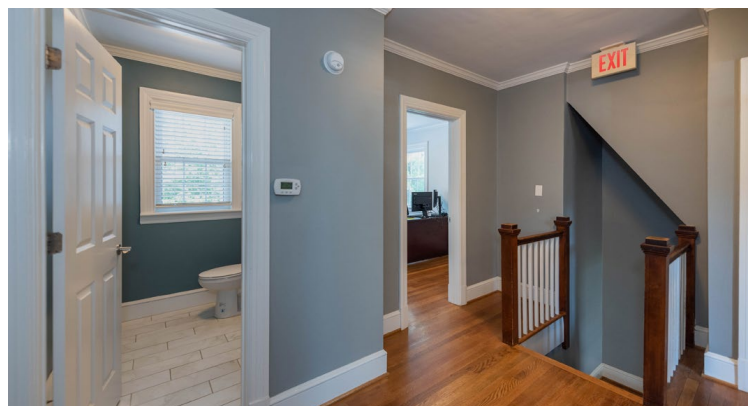




# For Lease: Office Building

1102 Welborne Dr

Richmond, VA 23229



Information contained within is deemed reliable, but is not guaranteed. Subject to prior leasing / sale.