

For Lease

1903 Manakin Rd, Suite F
Manakin-Sabot, VA | Goochland County



Small Office



PROPERTY HIGHLIGHTS

- **782 SF**
- Immediate possession
- 2nd floor walk-up

DELIVERABLES

- \$19/SF
- Electricity and partial janitorial



DEMOGRAPHICS

	3 Miles	5 Miles	10 Miles
Average HH Size	2.70	2.71	2.56
Total Population	6,684	51,515	194,266
Median HH Income	\$105,000	\$89,000	\$75,000



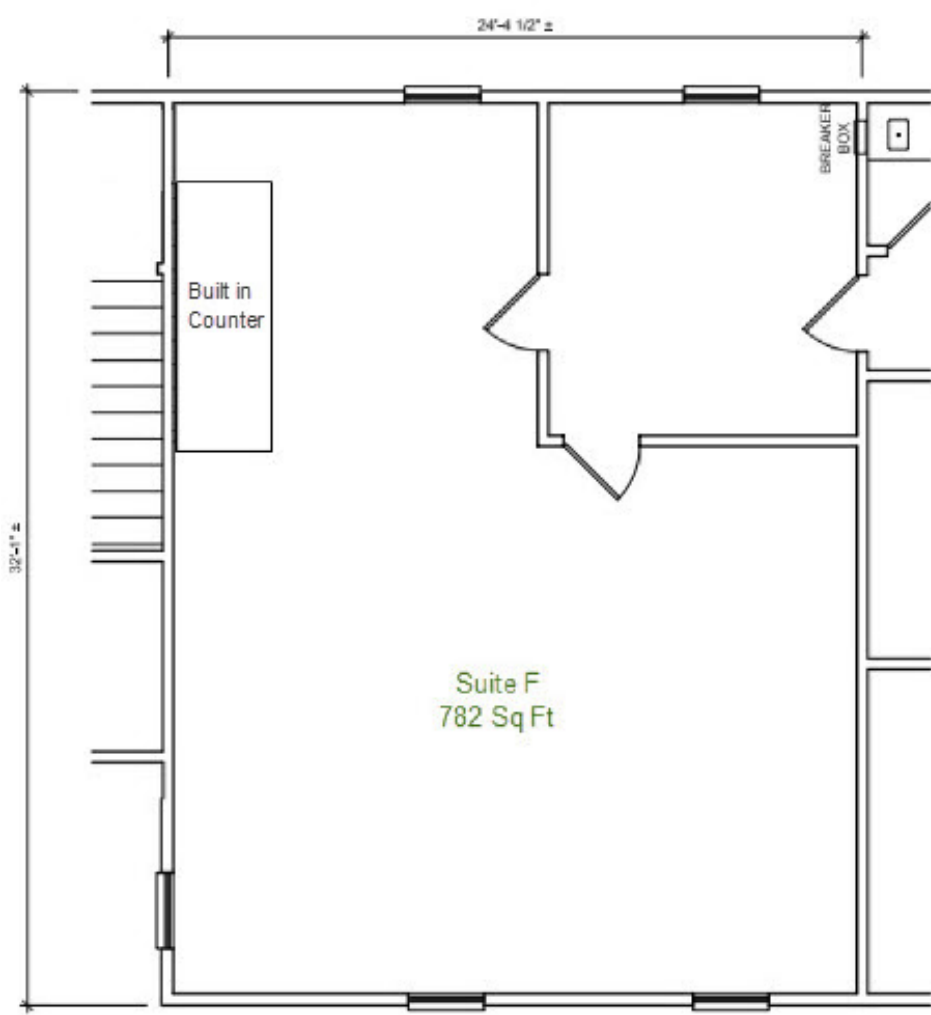
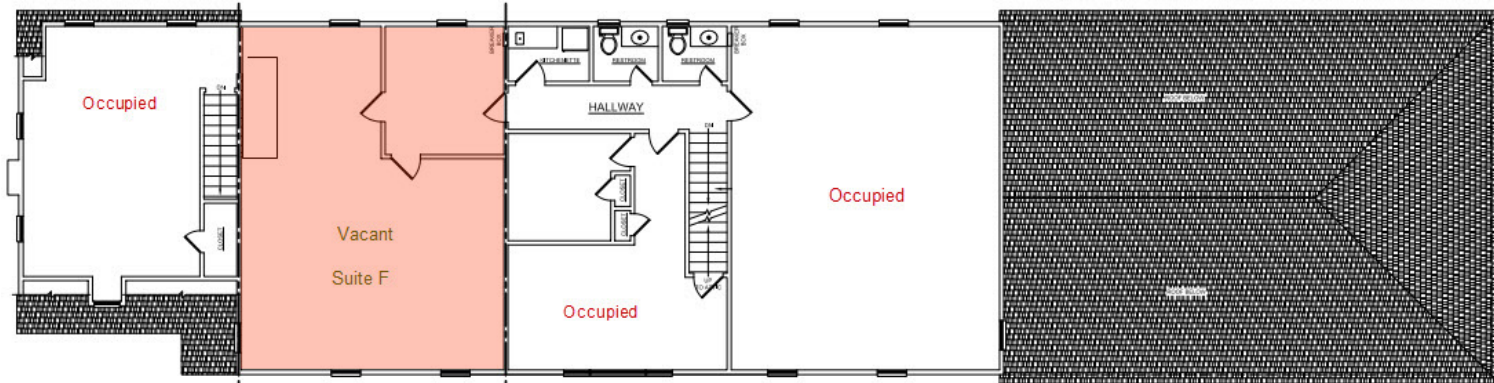
John Jay Schwartz, MCR, RPA
phone (804) 350-1866
jjschwartz@havesitewilltravel.com
www.HaveSiteWillTravel.com

For Lease

1903 Manakin Rd, Suite F
Manakin-Sabot, VA | Goochland County



FLOOR PLAN



John Jay Schwartz, MCR, RPA
phone (804) 350-1866
jjschwartz@havesitewilltravel.com
www.HaveSiteWillTravel.com