

INTRODUCING - PORT CITY CENTER

For Lease

812-816 Richmond Hwy | Richmond, VA 23224



THE MAN WITH

Celebrating 50 years with 50 million sq. ft.

50

Retail | Available Now



PROPERTY HIGHLIGHTS

RETAIL: 812-816 Richmond Highway

- 1,909 SF
- 5,502 SF (div)
- 8,015 SF adjacent green space
- 20± parking spaces



John Jay Schwartz, MCR, RPA
phone (804) 350-1866
jjschwartz@havesitewilltravel.com
www.TheManwithSquareFeet.com

INTRODUCING - PORT CITY CENTER

For Lease

812-816 Richmond Hwy | Richmond, VA 23224



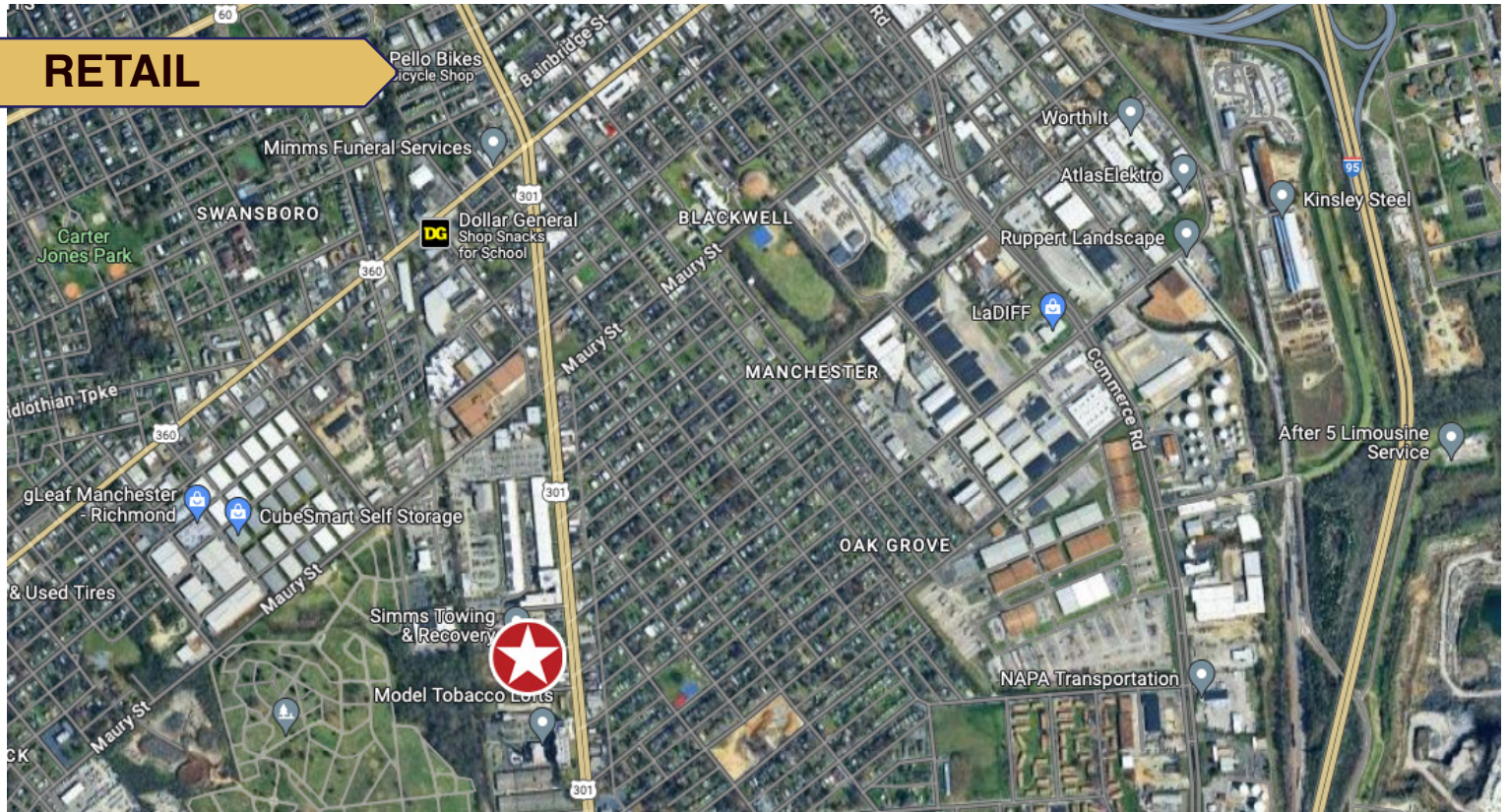
THE MAN WITH

Celebrating 50 years with 50 million sq. ft.

50

Retail | Available Now

RETAIL



John Jay Schwartz, MCR, RPA
phone (804) 350-1866
jjschwartz@havesitewilltravel.com
www.TheManwithSquareFeet.com



Information contained within is deemed reliable, but is not guaranteed. Subject to prior leasing / sale.